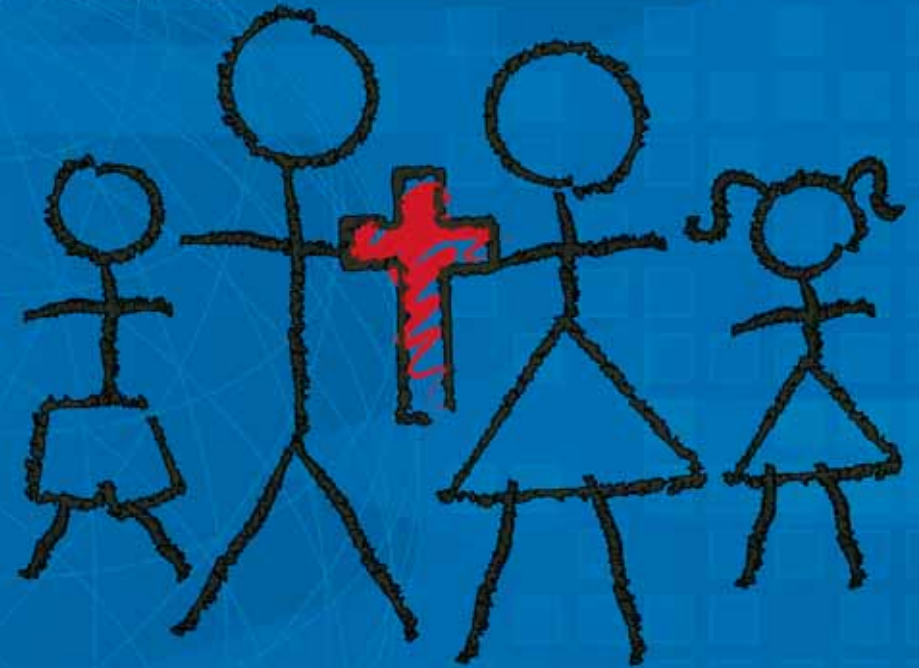




YOUTH WITH A MISSION

# Discipleship Training School for Families



Sjellebro, Denmark

PHOTO: FRANKLIN LUGENBEEL, GREGORY SPENCER/ISTOCKPHOTO.COM

## ► PRACTICAL INFORMATION ► HOUSING

**Where?** The school takes place at Sjellebro, YWAM's base and headquarters in Denmark, located 15 km. from the city Randers.

**Dates og prices:**  
See separate sheet

Families will stay in small, two room units with a bathroom and a kitchenette, simply and practically arranged.

We can receive up to 10 families in the school, not including staff



### APPLICATION:

Please contact us for application forms:

Youth With a Mission  
Randersvej 195  
8544 Morke  
Denmark

Phone: + 45 8697 4055  
E-mail: [dtsf@ywam.dk](mailto:dtsf@ywam.dk)  
Fax: + 45 8697 4385  
Web: [www.ywam.dk](http://www.ywam.dk)

PHOTO: PAWEL LOSEVSKY/ISTOCKPHOTO.COM



YOUTH WITH A MISSION

**Youth With a Mission**

E-mail: [ywam@ywam.dk](mailto:ywam@ywam.dk) • [www.ywam.dk](http://www.ywam.dk) • Phone: +45 8697 4055  
Fax: +45 8697 4385 • Add.: Randersvej 195, Sjellebro, 8544 Morke, Danmark

# What is a DTSF?

**Discipleship Training School for Families (DTSF) is a 5 months program consisting of three months teaching at Sjellebro (Youth With a Mission's base in Denmark) and a two month outreach.**

During the school the whole family will receive training in being a disciple. The goal is to help you and your family into a closer relationship with God and to go out serving Him.

Every week there will be: Quiet-time, personal counseling, group gatherings, intercession, worship, and family gatherings. There will also be some practical duties on the base.

## ► Teaching

Teachers from Denmark and abroad have been invited to teach on topics like:

- **Father heart of God**
- **Hearing the voice of God**
- **Discipleship**
- **Mission and evangelization**
- **Inner healing**
- **Prayer and intercession**
- **Renewal of the mind**
- **Marriage and child raising**

Each week will include a written assignment about the teaching.

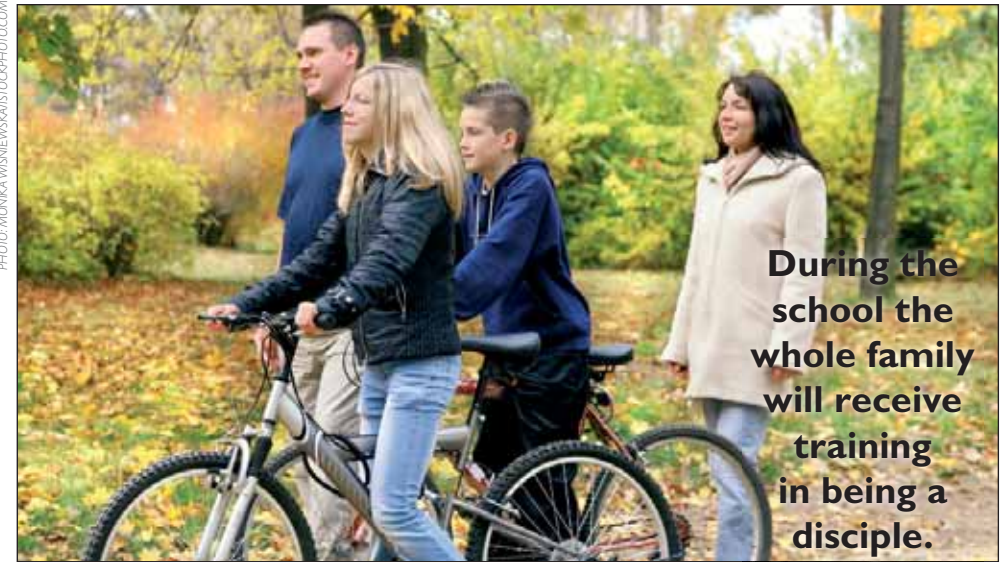
## ► Outreach

The main part of the outreach will take place abroad following the 12 weeks of teaching. As a family you will here be given the opportunity to work together and take into practice what you have learned.

During this time you will get a taste of what it is like to do missions work, as you will go out to different missionaries and take part in their work.

You will get a chance to take steps you never thought possible. The outreach part is as giving, challenging and up-lifting as the teaching part.

PHOTO: MONIKA WISNIEWSKA/ISTOCKPHOTO.COM



**During the school the whole family will receive training in being a disciple.**

## ► Children

It is our desire to make a school for families, so that not only the parents are participating but the children will have a natural and important part in everything. Besides school and play time, there will be teaching for the children based on their age, in the same topics as the parents receive teaching in.

Please notice that this is not a 5 month Family Camp. There will be a full program through the whole school but it is an investment for life!

## ► Leaders

Leaders of the school are Marianne & Hans Olesen, who have worked with families since 1990.

They have taught at several "Weekends for Married couples" and have been part of leading YWAM's Family Camps for some years.

In 2004 Marianne and Hans did a Family Ministry School in New Zealand and in 2005 they were group leaders on a DTSF in Norway.



The school takes place at Sjellebro, YWAM's base in Denmark.